

week. The maintenance fee covers the cost of ordinary investigation and treatment, except the physicians' fees, which are arranged direct or through the Almoner. In cases where parents cannot afford to pay the full fees, patients may be admitted to the private wards at lower rates, by arrangement with the Almoner.

On this floor also is the Operating Theatre suite, and here the colour scheme is of a very restful pale green, and the equipment of stainless steel.

The shelves of the linen cupboards are constructed of bars, which can be taken out to scrub or dust, so that dust cannot accumulate between the bars.

#### The Milk Laboratory.

Here we learned that the preparation of infants' feeds has become a science, and all nurses and probationers have to pass through a very special training in this important branch. Prescriptions for infants' feeds are sent to the Milk Laboratory, where all bottles and feeds are prepared by the nurses; these are made up for 24 hours and stored in a refrigerator until required.

The bottles are washed and sterilised in the Laboratory with the aid of a bottle-washing machine, by which, in relays of six at a time, the bottles are cleansed with spray and electric brush, then steeped and sterilised.

#### Unique Training in Care of Infants.

It can be well understood that the unique training obtained in this Hospital in the scientific treatment and care of infants is much sought after, and consequently Miss Littlejohn finds no difficulty in obtaining applicants for training. Probationers must be 18 years of age.

The Ward Sisters must have the double State Certificate for Children's and General Training.

During the tour, our kind hostess invited the Class to a delicious tea, which was served in the Board Room, after which the Outpatients Department was visited.

#### The Ophthalmic Department.

The arrangement of this department is exceptional; primrose tiled walls and floors of green terrazzo were much admired. On the ground floor are the Casualty, Receiving and Weighing rooms, and a very special feature of the Outpatients' Department is the balcony above, off which lead its special departments for Ear, Nose and Throat, X-Ray, Massage, and an Outpatients' Operating Theatre suite; and again in the theatre stainless steel equipment is much in evidence.

Greatly appreciated is the buffet attached to this De-

partment, which is conducted by voluntary workers for mothers, and where tea and biscuits may be provided for 1d. and bottles heated.

There was so much of interest to be seen in this beautiful Hospital, that time did not permit of more than a glimpse of the Nurses' Home; the goodly size of the bedrooms, each provided with hot and cold water, radiator, hot towel rail, the roomy built-in wardrobe, the double-way electric light switch for reading in bed, the shampoo and laundry rooms all excited keen interest. The nursing staff is also provided with sitting-room, silence room, and rooms for lectures and practical demonstration.

The Sisters' rooms with divan, which is made up at night for them, are furnished as bed-sitting rooms and have home-like individuality. In addition the Sisters have a comfortably furnished general sitting-room.

It was interesting to note in the patients' waiting room a portrait of the Princess Royal, painted by the artist, Richard Jack, R.A., as a contribution to the funds raised by the Infants' Hospital Ladies' Appeal Committee, and purchased by Sir Gomer Berry, Bart., by whom it was presented to the Hospital.

#### Administration Class grateful for Instructive Visit.

The Fellows and Members of the British College of Nurses Administration Class expressed their gratitude that the Management had so kindly permitted this instructive visit, and felt they could not thank their hostess, Miss Littlejohn, too warmly for her untiring courtesy and

kindness, and for the valuable instruction imparted on the efficient nursing care of infants, so much appreciated by them.

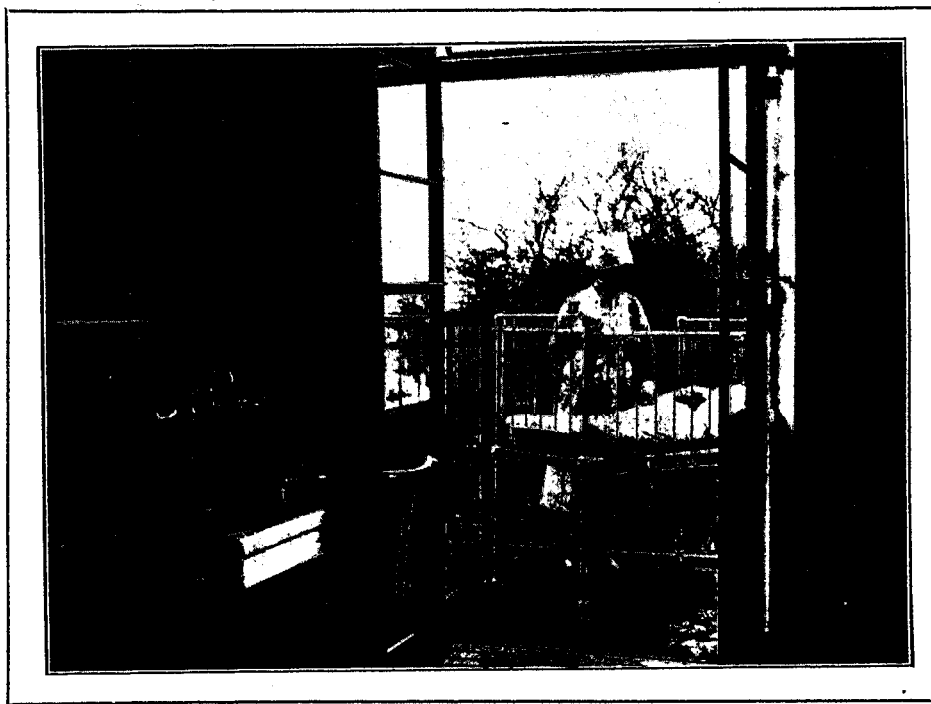
Those responsible for the high standard of training in this wonderful centre of healing are to be congratulated, for, in the Infants' Hospital, Vincent Square, it would seem ideal construction, equipment, and faultless management combine in this veritable Mecca for the healing of sick babies, where the marvels of medical science and nursing skill arrest and cure the ills of tiny travellers at the outset of life's journey, so helping the great work of building up healthy and robust citizens.

We are indebted to the courtesy of the Secretary of the Infants' Hospital for the illustrations which appear in this article.

ALICE STEWART BRYSON.

The world has no such flower in any land,  
And no such pearl in any gulf the sea,  
As any babe on any mother's knee.

SWINBURNE.



A Private Ward Opening to Balcony.

[previous page](#)

[next page](#)